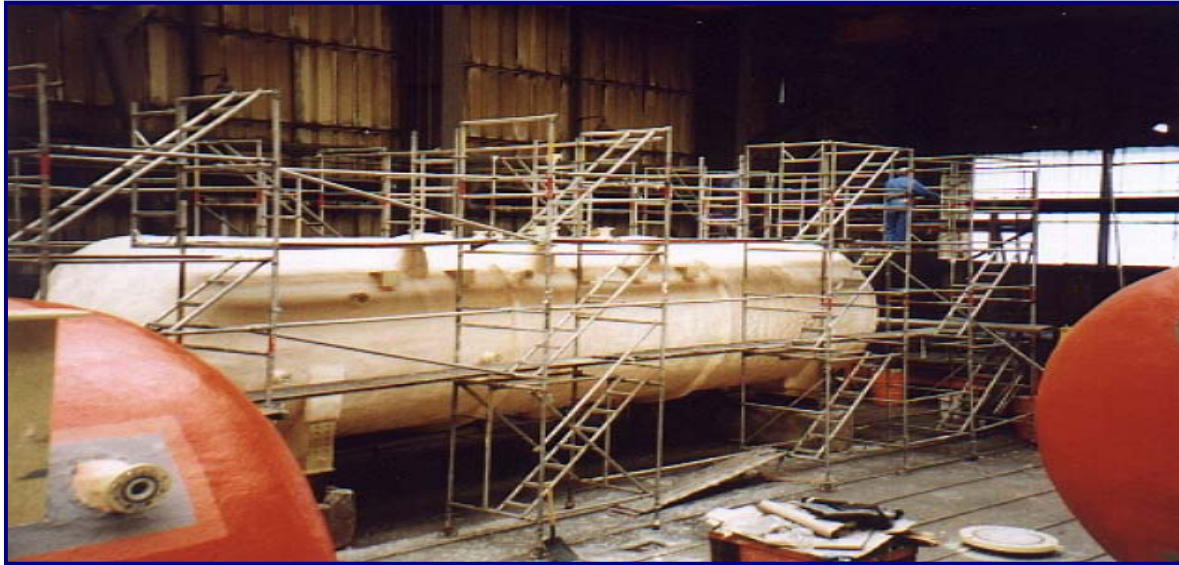
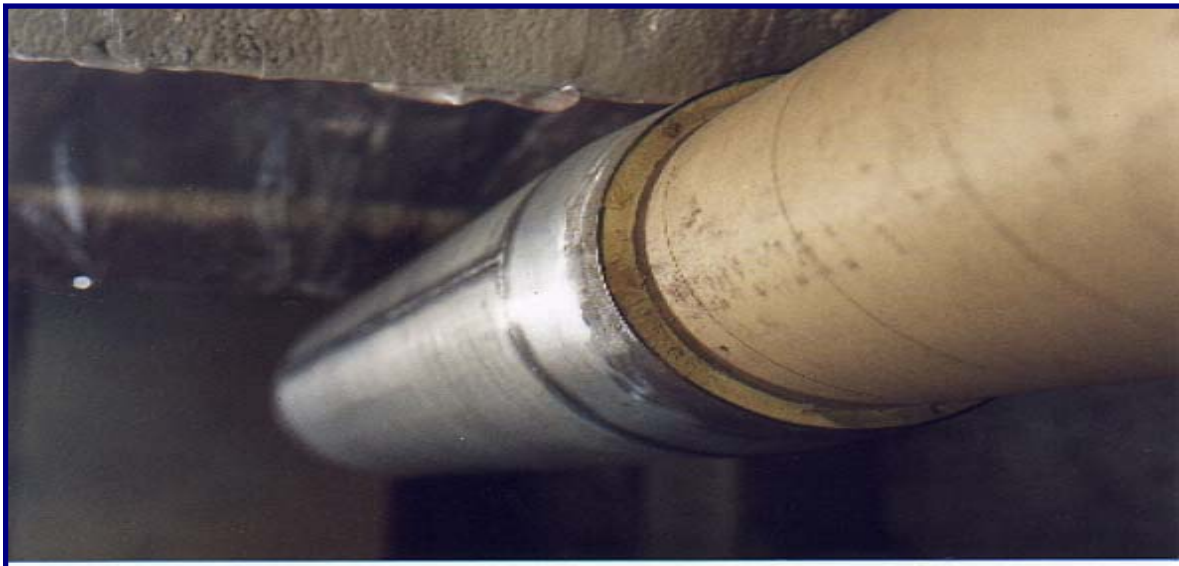


## SYNTACTIC COATING



**BP FOINHAVEN SEPARATORS**

These vessels were fireproofed using an epoxy intumescent. As they operated above 60 °C, the intumescent threshold, they were insulated using a Syntactic insulant, “Contratherm”, this material was applied by trowelling multiple layers.



**NORWEGIAN RISER PIPE INSULATION**

